

Local Sponsor Support

BULK TANK (\$1,000 and up)

Burnips Equipment Company
Coyne Oil & Propane
Doneth Family Percherons
DTE
Ellens equipment
Farm Services Inc.
Foxworthy Supply Inc
Granger Waste Services
Greenstone Farm Credit Services
McConnell Farm Supply
Michigan Blueberry Advisory Comm.
Michigan Milk Producers Association
Michigan Soybean Committee
Perfect Party by Julie
The Nature Conservancy
United Dairy Industry of Michigan
Vander Veen Napa- Six Lakes & Edmore
Yoplait/General Mills

GALLON (\$500-\$999)

Chapin Family Farms, LLC
Cody Rockafellow
Dairy Farmers of America
Great Lakes Dairy Supply
HomeWorks Connect
HomeWorks Tri-County Electric
HomeWorks Tri-County Propane
Hutson Inc.
Ice Mountain
McConnell Farm Supply, Inc.
Mecosta County Farm Bureau
Michigan Sugar Company
Roberts Dairy Service
Star of the West Milling Company
Vita Plus - Garrett Slavik
Zeeland Farm Services, Inc.

Visitor Policy

For your safety and the safety of the cows, **all children must be accompanied by an adult** and we ask that you:

1. Sign our visitor log in the welcome tent
2. Please eat before touring our farm
3. Wear the provided shoe covers while on the tour or in the barns
4. Follow the tour route and enter facilities at designated points
5. Use hand sanitizer/wash your hands after touring the farm or touching the animals
6. Let us know if you have been outside of the United States within the past seven days before proceeding on the tour
7. Refrain from smoking and bringing pets onto the farm

The health and welfare of the animals, and the safety of the products they produce, is of highest priority.

This policy was developed to help protect the animals, the products, and you.

I authorize Michigan State University to record my image and voice (or that of my minor child) and give Michigan State University and all persons or entities acting pursuant to MSU's permission or authority, all rights to use these recorded images. I understand that said images will be used for educational, advertising and promotional purposes in all conventional and electronic media, and any further media. I also authorize the use of any printed material in connection therewith. I understand and agree that these images and recordings may be duplicated, distributed with or without charge, and/or altered in any form or manner without future/further compensation or liability, in perpetuity.

QUART (\$250-\$499)

Black Locust Farms LLC
Boge Wybenga & Bradley, P.C.
Dairyland Seed
Dairyland Seed - John & Lisa Black
Fate's Market
Farm Country Cheese House
Helders Forage Storage LLC
HomeLoans
In Honor of Annette Alice Clark
Kay Sellers
Krapohl Ford & Lincoln
Lakeview Veterinary Services
Marloo Equipment, LLC
Michigan Farm Systems Inc.
NAP Harvesting
Top Line Equipment Inc.
Trayer Water Wells

PINT (up to \$249)

Beth Syperda
BIGGBY - Big Rapids Store #246
Calf-Tel
Community First Federal Credit Union
Debra Damveld
IMV Imaging LLC
Lakeside Motor Sports
Leprino Foods
Links of Edmore
Sandi Hoppough
Stoney Ridge Sugar Bush
Uphill Farm
Wayland Hopkins Livestock



Enjoy a free breakfast and
learn about the food you eat!
meet farmers • see tractors • visit animals



De Grins Oer Dairy

July 29, 2023



Statewide Sponsors

Corn Marketing Program of Michigan
Michigan Corn Growers Association



DAIRYLAND SEED



MICHIGAN WHEAT PROGRAM



MICHIGAN SOYBEAN COMMITTEE



FARM BUREAU INSURANCE

Michigan's Insurance Company



GreenStone FARM CREDIT SERVICES



MICHIGAN FARM BUREAU



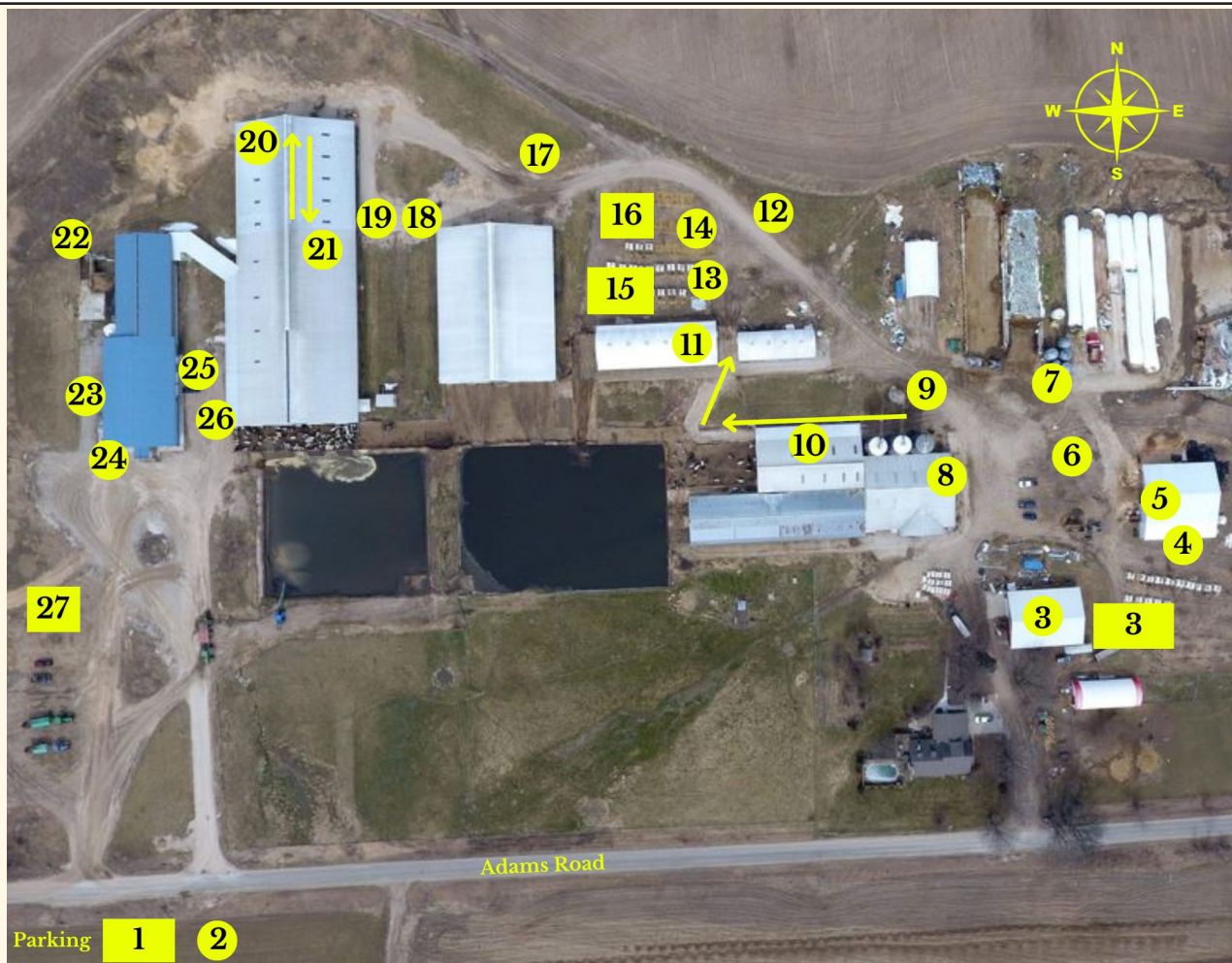
MICHIGAN FOUNDATION FOR AGRICULTURE



Dairy Farmers of America



MILK
MEANS MORE



- | | | |
|--|---------------------------|--|
| 1. Welcome | 10. Dry Cows | 20. Dairy Cow Nutrition |
| 2. Optional Wagon Ride to Breakfast Area | 11. Heifer Barn | 21. Cow Housing |
| 3. Breakfast Area | 12. Crops | 22. Nutrient Management |
| 4. Biosecurity | 13. Sheep | 23. Rotary Parlor |
| 5. Commodity Groups | 14. Calves | 24. Teat Spray Robot |
| 6. Equipment | 15. Children's Activities | 25. Milk Quality & Safety |
| 7. Feed Storage | 16. About the Family | 26. E-RAIL- Emergency Response for Accidents Involving Livestock |
| 8. Maternity & Animal Wellbeing | 17. Ag Olympics | 27. Ice Cream/Kids Quiz/Exit Survey |
| 9. Natural Recycling | 18. Hoof Trimmer | |
| | 19. Pollinators | |

A program of: **MICHIGAN STATE UNIVERSITY** | Extension

MSU is an affirmative-action, equal-opportunity employer.